

## Please Help

Giving us your time is as important as money. Volunteers bring passion, enthusiasm, new ideas and individual skills.

We need:

- An Organising Committee for future fund raising events,
- Grant Application Volunteers to apply to many possible Aid Givers,
- Modern Day Creators of Booklets and Pamphlets, which explore and reveal the history of St. Mary's Church and Comberton Village,
- The re-imagining of good ways in which to extend the use this lovely building.

For example to be an Education Resource linked via internet with our village schools, local businesses and more widely. St. Mary's Church itself already supports missions in Leicester, Africa and India.

Contributions in kind are also welcome.

If you can donate holiday rental, time on special forms of transport, passes to events, theatre/concert tickets or other such things, please contact:

David Hughes, Meadowside 26 Swaynes Lane, Comberton CB23 7EF or Tel. 01 223 263355 or email [Chairman@friends-of-st-marys.org.uk](mailto:Chairman@friends-of-st-marys.org.uk).

## Please Donate

The Trust is recognised by HMRC as having charitable status. This allows us to reclaim tax from them on any donation made by taxpayers.

Thus each £10 donated to the Trust is then worth £12.50.

For regular giving please contact the Treasurer ([Treasurer@friends-of-st-marys.org.uk](mailto:Treasurer@friends-of-st-marys.org.uk)) who can give you details on how to setup a standing order.

Please donate to  
"Friends of St. Mary's Church Comberton"

More information on events, background material and contact details are available on our website [www.friends-of-st-marys.org.uk](http://www.friends-of-st-marys.org.uk) where, for example, you can download a Gift Aid Form.

## Please Support

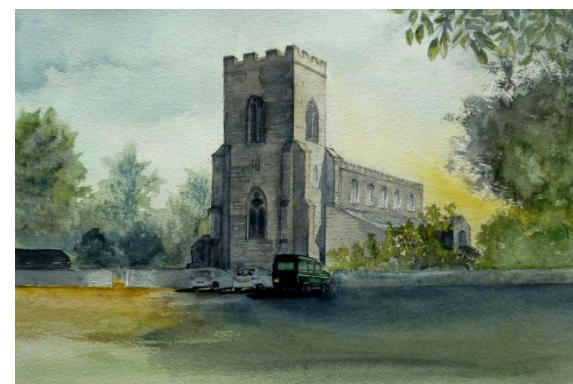
The Trust has run and is supported by events in and about St. Mary's Church and plans to have additional ones in the near future. The website tells you more about these events.

*Friends of St Marys Church Trust First Trustees -  
John Crang, Godfrey Curtis, Richard Elleray and  
David Hughes.*

June 2017

[www.friends-of-st-marys.org.uk](http://www.friends-of-st-marys.org.uk)

# The Friends of St. Mary's Church Comberton Trust



## Our Target for fund raising is £35,000 by 2021

**This sum will cover repayment over 4 years of a loan of £13,000 for new roof lead and security system after two thefts, and for restoration work identified in the Quinquennial review in 2014.**

**Our next Quinquennial review is due in 2019.**

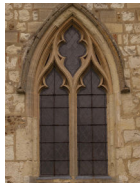
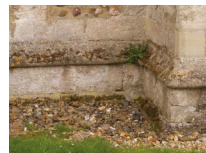
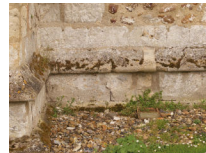
# Urgent - Phase 1 Water damage



9.2.13 Redecorate external ferramenta to Tower windows 16.5 £750



9.2.5 Minor low level repointing to Tower plinth and limewater consolidation to clunch to Tower west window 14.1 £750



9.2.4 Repoint whole length of cover flashing at clerestory abutment to South aisle 10.6 £600



9.3.3 Remove cement repairs and carry out stone replacement to window reveals to North aisle 14.4 £3,000 -£5,000



9.3.2 Repoint north east buttress to North aisle on west side at high level 14.4 £300

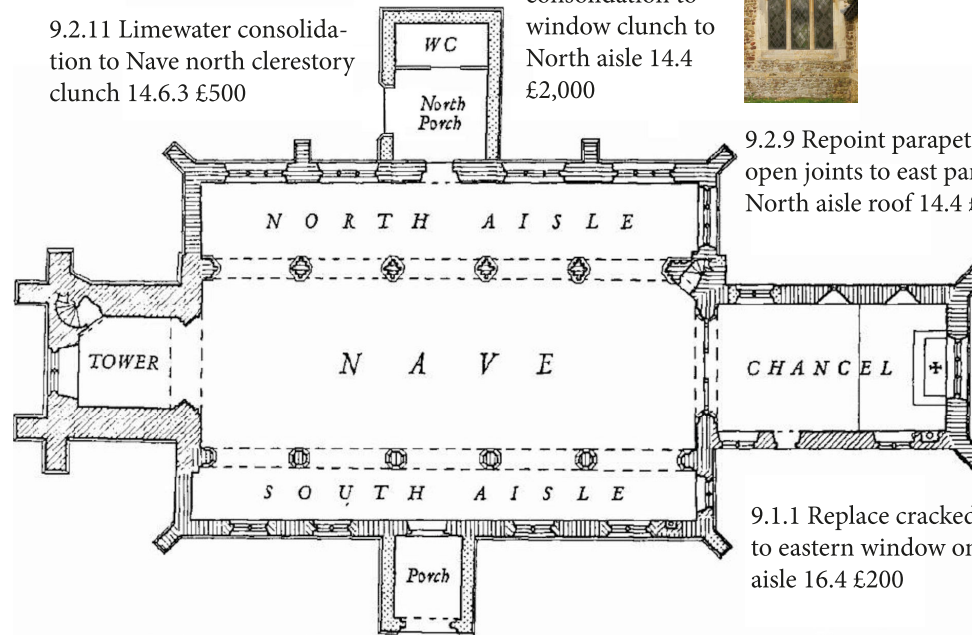


9.2.11 Limewater consolidation to Nave north clerestory clunch 14.6.3 £500

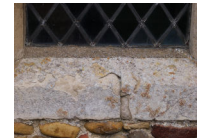
9.2.8 Limewater consolidation to window clunch to North aisle 14.4 £2,000



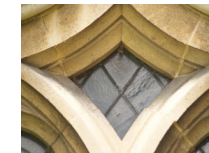
9.2.9 Repoint parapet stone open joints to east parapet on North aisle roof 14.4 £500



9.2.7 Repair fractured stone jamb to Chancel east window on north side. Limewater consolidation to remaining clunch jambs to Chancel 14.3 £1,500



9.1.1 Replace cracked quarry to eastern window on south aisle 16.4 £200



9.2.10 Limewater consolidation to south porch stonework 14.5 £500



9.2.6 Repair stone fractures to South aisle windows and limewater consolidation to all remaining clunch 14.2 £2,000

